

NOZZLE FLOW TEST BENCH

B_21693



Bench designed for testing lubrication nozzles.

The bench consists of a metal structure with glazed front doors, the upper part for mounting nozzles in test, the lower part for the weighting group and the fluid recovery and conditioning tank.

The test bench is completed by the DAS console and the electrical panel. The control and signaling console incorporates all the control functions for the execution of the test.

TECHNICAL DATA:

- Fluid: olio MIL L 23699;
- Temperature: $30 \div 120$ °C;
- Pressure: 1500 kPa;
- Flow: 25 lpm;
- Measure time: $0 \div 5$ min;
- Max no. of jets per nozzle: < 8.

INSTRUMENTATION:

- Pressure: f.s. 10 bar, cl. 0,05%;
- Flow: f.s. 25 lpm, cl. 0,05%;
- Temperature: sonda PT100, cl AAA;
- Weight: 20 Kg, accuracy cl. 0,05%.

SAFETY DEVICES:

- Inhibition of the exhaust circuit bench;
- Interlock on test compartment hatch;
- Mushroom emergency button;
- Automatic interruption of the test in case of breakage, component leakage or malfunction of the bench;
- Maximum pressure valve;
- Thermostat of maximum temperature.

SUPPLIES:

- Electric: 400 Vac - 50 Hz - 12 kW;
- Compressed air: 6 bar;
- Water: 3,5 bar.

DIMENSIONS AND WEIGHT:

- L, p, h: 2000 x 1200 x 2140 mm;
- Raw weight: ~ 1100 kg.

COLOR:

- Standard: Gray RAL 7035.

NOTE:

- Fluids and adapters not included;
- The test bench is equipped with a Siemens® PLC system;



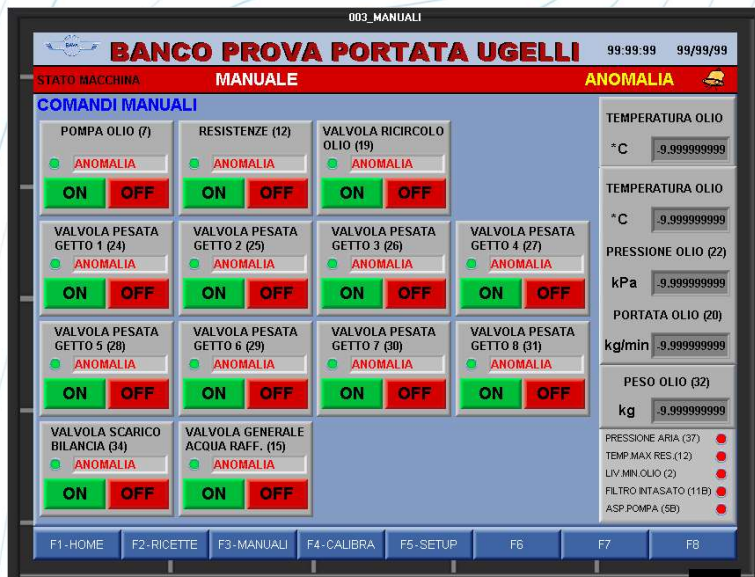
HARDWARE:

The test management and data measurement and visualization system consists of:

- a PLC;
- multiple analog and digital I/O modules;
- a 10" HMI touch screen panel.

SOFTWARE:

Tailor-made software allows setting of test parameters and automatic management of it.



GUI is customizable in multiple languages.